



## NCPC Board Approved Definitions January 2022

Value statements: We value having an expansive list of evidence-based and evidence informed options and recognize the role local knowledge and experience plays in adapting and modifying interventions. We value diverse evidence sources that increase equity and access to services, particularly among rural and minority communities.

Evidence-based programs, practices, and tools are interventions which independently show consistently\* positive outcomes for participants when tested using comparison groups.

Evidence-informed programs, practices, and tools are interventions which show consistently\* positive outcomes for participants through methods other than the use of comparison groups, such as program evaluation, qualitative studies, quantitative research, and/or are generally held solutions within the fields of early care and education, infant, child and family health, and parent education.

*\*In this definition, consistently refers to the number of studies outlined in NCPC's EBEL criteria and catalogue.*

## Definitions for practice and criteria for Smart Solutions approval

Minimally all evidence presented must meet the basic criteria for approval in Smart Solutions by NCPC requiring clear and transparent methods, minimal bias, ethical practices, and well documented analysis.

- Clear and Transparent Methods means having a sufficiently thorough accounting of the research questions, study/evaluation design, instruments, data collection and analysis that the reader has a clear enough understanding of the program being examined and the study/evaluation to easily envision recreating the program and the study.
- Minimizing Bias means taking clear steps to ensure that: 1) participant responses are not influenced by the staff implementing the program, 2) participants of varying literacy levels and language backgrounds are supported, and 3) there has been sufficient external review of analysis and interpretation to identify and reduce any potential bias in causal logic (e.g., reviewed by faculty at local college/ university, external evaluator or consultant). One tool for minimizing bias that NCPC strongly recommends is the disaggregation of data based on a variety of variables, including demographic variables.
- Ethical Practice means that whether an IRB has reviewed the study/evaluation or not, the kinds of consent, protection of participants, data collection, storage, and sharing protocols, and prevention of analytical bias that an IRB would require are integrated into the research methods and analysis.
- Well Documented Analysis means that, if provided the data collected, a skilled analyst would be able to recreate the analysis and arrive at the same findings.

**Evidence Based (EB):** at least 2 independent\* studies that show positive outcomes for participants when using comparison groups. Examples of comparison groups would include randomized controlled trials (RCTs), matched pairs studies, and population comparisons among others. Additionally, we expect that evidence for evidence-based programs would be produced by outside experts beyond those who have an interest or are stakeholders in the development and success of the program, to avoid any potential conflict of interest.

**Evidence Informed (EI):** at least 2 independent\* studies or evaluations that show positive outcomes for participants through methods other than the use of comparison groups. These include approaches such as program evaluation, qualitative studies, quantitative research, and/or are generally held solutions within the fields of early care and education, infant, child and family health, and parent education.

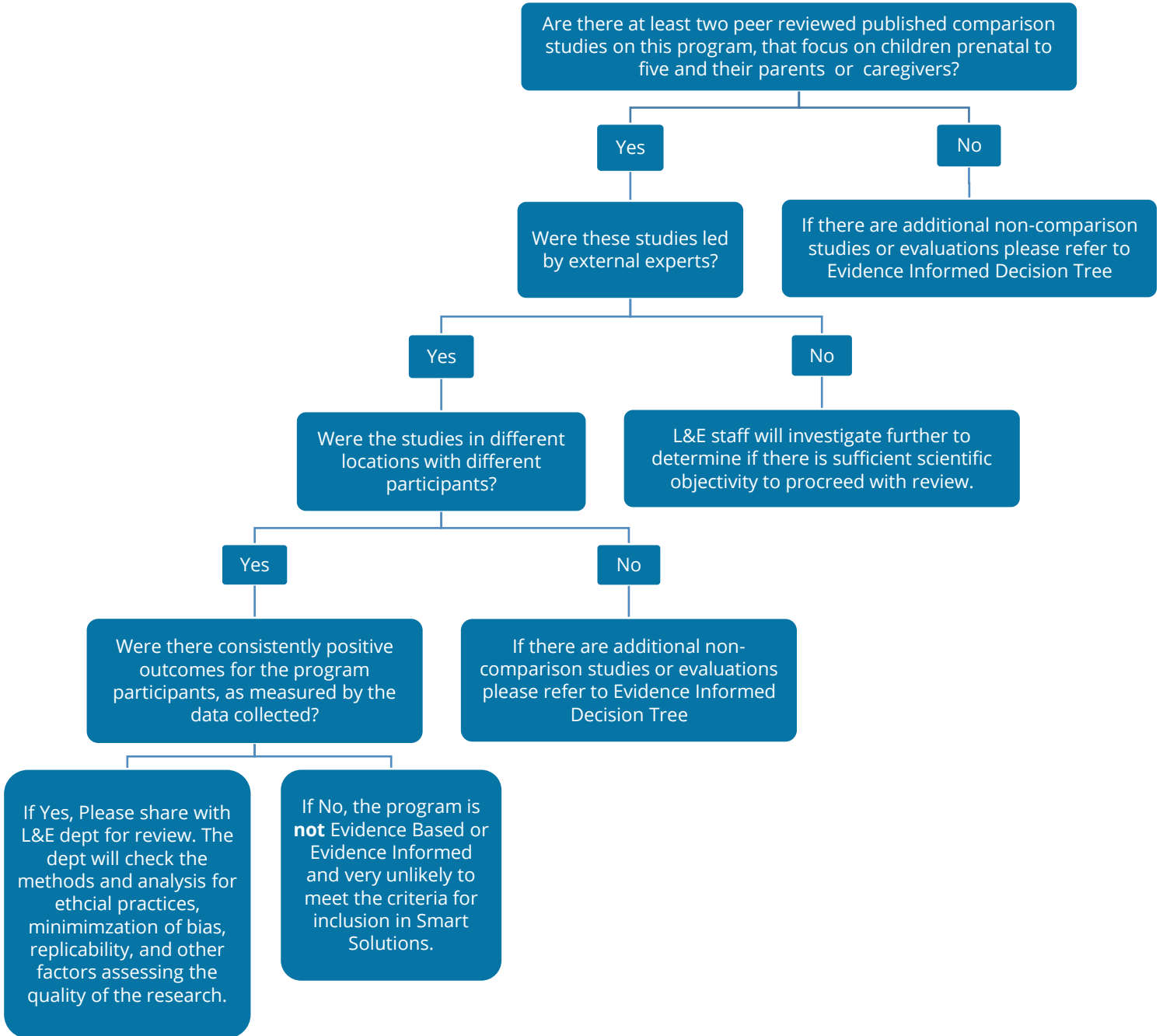
Generally held solutions means that a strategy or program is commonly funded by North Carolina state agencies, or other states, and/or federal governments, and endorsed by reputable organizations in the field. Examples of generally held solutions include WAGE\$, early childhood education subsidy, breastfeeding support, and services from licensed and credentialed professionals.

When multiple strategies are put together in a single model or program, we prefer that the model has been tested for efficacy as a single program, to ensure that the interaction of these strategies creates a positive outcome for participants.

*\*Independent in this context means that the participants whose experience is being assessed are different groups or cohorts, so that the reports are not different impacts on the same people, but rather different implementations showing consistently positive outcomes for different groups of participants.*

# Is this Program Evidence Based?

Use the chart below to help explore the Smart Solutions evidence review process.



# Is this Program Evidence Informed?

Use the chart below to help explore the Smart Solutions evidence review process.

